



Project Journey

Quarterly Update to MWAA Board of Directors

July 2019

Turner



AGENDA



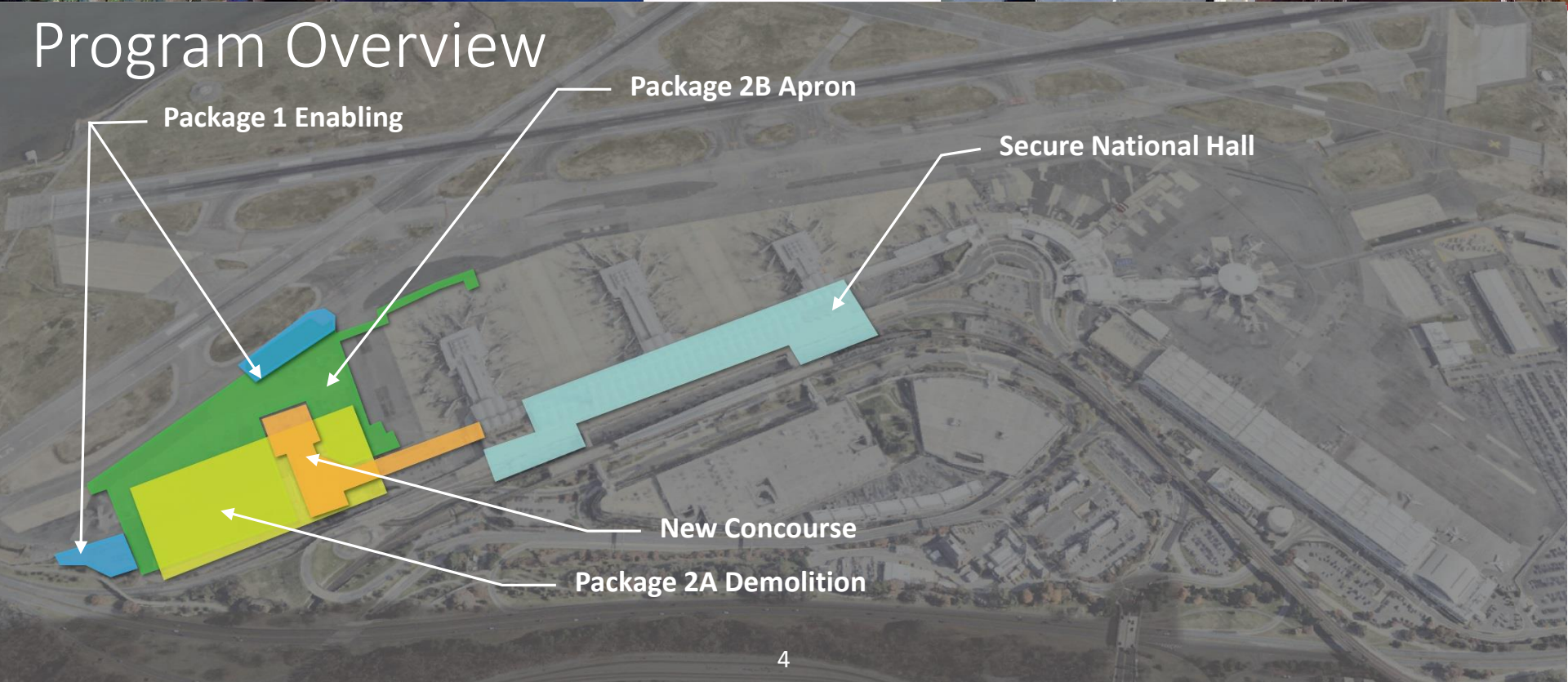
1. Program Overview
2. Project Status
3. Safety
4. Community Benefits Plan



Program Overview



Program Overview



Package 1 Enabling

Package 2B Apron

Secure National Hall

New Concourse

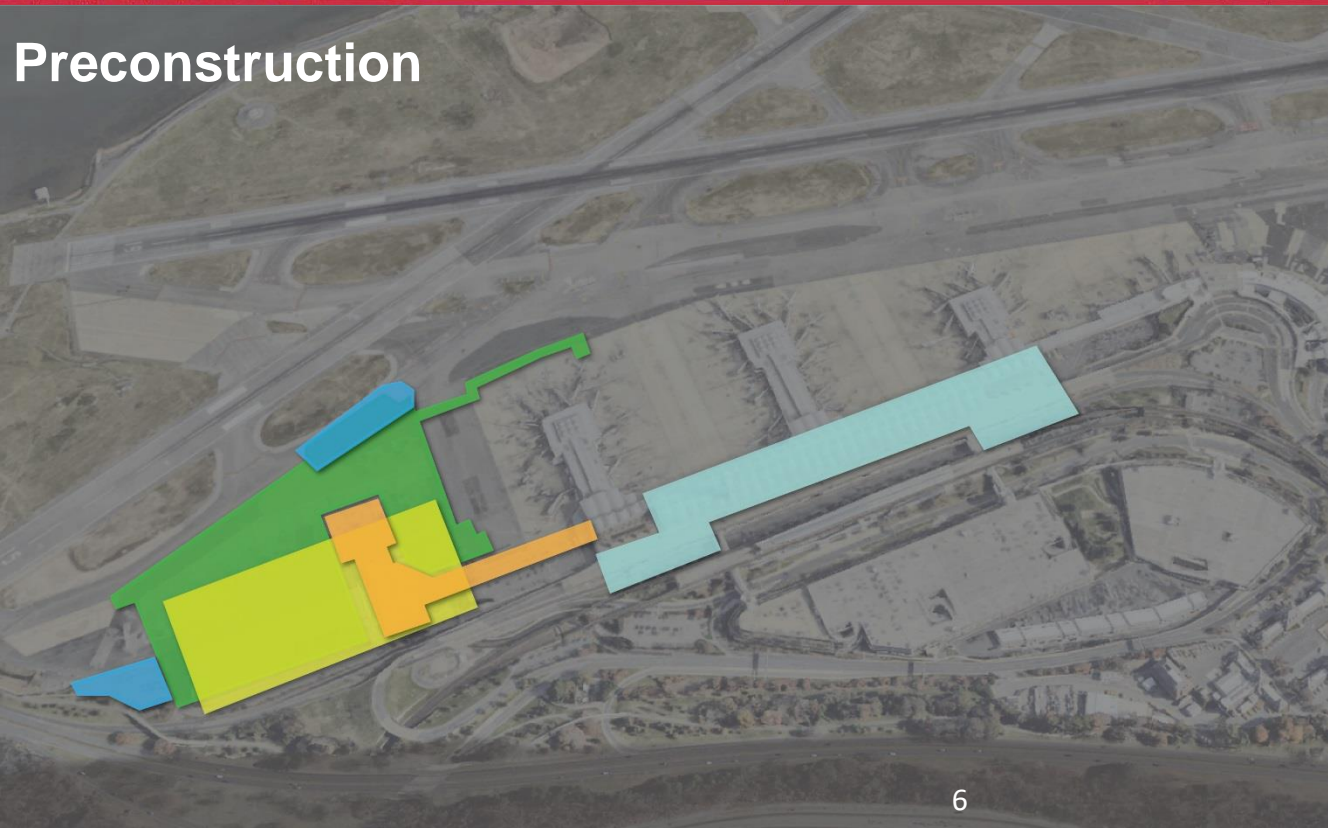
Package 2A Demolition



Project Status



Preconstruction



- Design Reviews
- Constructability Reviews
- Estimating
- Scheduling
- Value Engineering
- Development of Firm Fixed Price

% Complete

100%



Package 1- Lot K / Airfield Area A Paving

STATUS: *Construction Completed*



Before



After

- Relocation of American Airlines Commuter Ramp Operations Facilities
- Airfield Ramp Pavement Extension
- Utility Work

Construction % Complete 100%





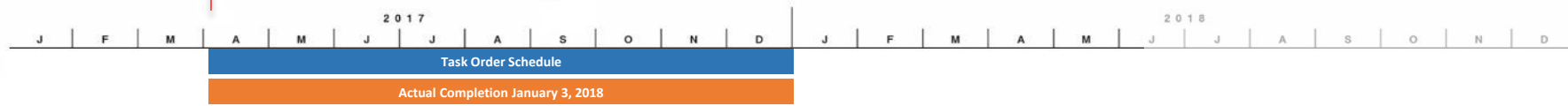
Package 2A – Demolition of Hangars & MWAACOB

STATUS: *Construction Completed*



- Demolition of Hangars 11/12 and MWAACOB
- Relocation of American Airlines Commuter Aircraft Parking
- Air Operations Area (AOA) Fence modifications

Construction % Complete 100%





Package 2B – Apron

STATUS: *In Construction*



- Phase 1 Surcharge Complete & Removed
- Placement of P-501 Airfield Paving
- Installation of Utilities Inside Surcharge Area
 - a. Hydrant Fueling
 - b. Storm Drainage & Glycol Diversion
 - c. Electrical / Communications (Upcoming after New Year)
- Construction on Existing Utilities
 - a. Installation of Manhole 11 ; Tie in to existing 60-inch storm drain (not pictured)
 - b. Cleaning / Repair of Existing 60-inch storm drain (not pictured)

**Construction
% Complete**

48%

NTP



Current Schedule

May
2021



Package 3 – New Concourse

STATUS: *In Construction*



- Completion of North Sub-Station Underpinning (awaiting RFI response for elimination of 4 Pits ; 6 pits currently eliminated via RFI-364)
- Installation of Generator Ductbanks
- Test Pitting for Utilities
- Installation of Piles
 - a. Auger Cast
 - b. Driven Precast Piles
- Transition at Loading Dock C
 - a. Installation of Temp Ramp & Door at Bay C1
 - b. Preliminary Work for Relocation of Fence Between Bays C4 and C5
- Installation of AESS Mock-Up Pad
- Demolition of Existing Utilities
- Erection of Structural Steel

**Construction
% Complete**

12%



2018

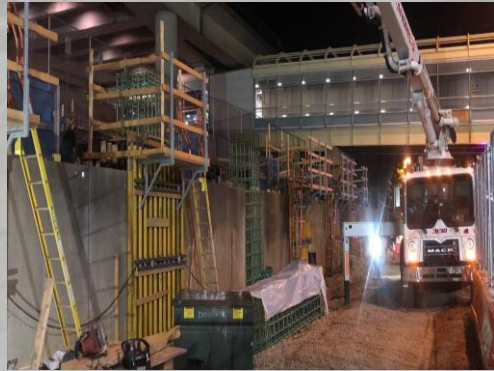
Current Schedule

July
2021



Secure National Hall

STATUS: *In Construction*



- Security Identification Display Area (SIDA) Wall Steel installation is nearing completion. SIDA Glass rail mockup installation underway
- Concrete Foundation Work now ongoing on the South Security Platform structure
- Metro Bridge Tunnel erection ongoing
- High Temp Hot Water Re-route work underway

**Construction
% Complete**

30%





Safety

Safety



As of June 18, 2019

Man Hours	685,438
Recordable Incident Rate (RIR)	0.58
Lost Time Incident Rate (LTIR)	0
Safety Orientation (Total Employees Trained)	2,752

SAFETY **Living**
Injury Free
Every Day[®]



Community Benefits Plan

Update

1. Training and Apprenticeship Program *On-Going*
2. Veterans Program *On-Going*
3. LDBE Subcontracting Programs *Outreach Completed*
4. LDBE Training Program: Turner School of Construction Management (TSCM) *On-Going*
5. LDBE Mentor/Protégé Program *On-Going*
6. Career Outreach Program *On-Going*
7. Summer Youth Program *On-Going*
8. Community Hotline / Website / Other *On-Going*

REQUIREMENT: *On-Going Engagement*

Working with union shops to ensure placement of apprenticeship interests on the New Concourse (NC) and Secure National Hall (SNH)

Firm	Trade/Services
Kalkreuth	Roofing and Sheet Metal
Schindler	Elevators
NFP	Fire Suppression and Sprinklers
RM Thornton	Mechanical and Plumbing
AIW, Inc.	Misc. and Ornamental Metals
Jervis Webb	Baggage Handling
Boatman & Magnani	Terrazzo
Gelberg	Signage
ISEC, Inc	Millwork and Interior Wall Panels
Berlin Steel Construction Co.	Structural Steel Framing
Universal Builders Supply	Scaffolding

Apprenticeship Activity Jan 1, 2017- April 30, 2019 **Turner**

Task Order	Total Craftsman Hours	Apprenticeship Hours	% Apprenticeship Hours	Trades
NC Package 1	42,868	2,603	6.1%	electrical, pipelayer, roofing
NC Package 2A	30,270	2,113	7.0%	electrical
NC Package 2B	102,885	1,815	1.8%	electrical
NC Package 3	70,742	4,251	6.0%	electrical, steamfitter, and plumbing
SNH	150,889	10,261	6.8%	electrical, iron worker, plumbing, sheetmetal, steamfitter

REQUIREMENT: *On-Going Engagement*

✓ Continuous Focus for Internal Hiring/Development

- Recruitment
 - On-Going
- Development and Retention:
 - Employee Resource Group (26 veterans + associates/family members, etc.)

✓ Activities

- Veterans Administration Partnership
 - Retired Army Nurse – disabled, day of home maintenance tasks, purchase and installation of new dryer
- **Support from LDBE Vendor Sylvester Bush of MGS Group**
 - Furnish and Decorate home of a formerly homeless Veteran.
- 35th Annual Army 10 Miler – 20 participants committed





Regular Meet and Greet

Ongoing



Ward 4 Business Summit and Expo

ABC Diversity & Inclusion Summit

MWMCA Minority Outreach Fair



Hispanic Chamber of Commerce Gala



Task Order	Total Subcontracts	Total Subcontracts with LDBE	Status
NC Package 1	22	16	Executed TO
NC Package 2A	23	17	Executed TO
NC Package 2B	29	26	Executed TO
NC Package 3	51	29	Executed TO
SNH	54	36	Executed TO

LDBE Subcontracting Programs

Turner

REQUIREMENT: 25%

AWARDED TO DATE: 27%

			LDBE-AWARDED	
Task Orders	CURRENT INDICATED REVENUE (\$)	WIP (%)	\$	%
Pre Construction Secure National Hall	\$1,569,811	99.94%	\$197,674	13%
Pre Construction New Concourse	\$2,001,494	99.95%	\$211,900	11%
New Concourse Package 1	\$10,025,432	100%	\$3,659,452	37%
(Temp Pavement/Utilities)				
New Concourse Package 2A (Demolition Of Hangars 11/12 and COB)	\$10,704,050	100%	\$3,543,029	33%
New Concourse - Package 2B	\$74,485,087	45.92%	\$23,886,015	32%
New Concourse - Package 3	\$195,127,253	14.31%	\$52,773,948	27%
Secure National Hall	\$200,560,655	25.71%	\$47,013,696	23%
TOTAL	\$494,473,782	27.90%	\$131,285,714	27%

LDBE Subcontracting Programs

PAYMENT STATUS

Task Orders	CURRENT CONTRACT AWARD AMOUNT	LDBE COMMITMENT (%)	LDBE COMMITMENT (\$)	LDBE ACHIEVEMENT (\$)	PAYMENT TO LDBE (%)	PAYMENT TO NON LDBE(%)
SNH Precon	\$1,569,811	13%	\$197,674	\$197,674	13%	4%
NC Precon	\$2,001,494	11%	\$211,900	\$210,775	11%	5%
NC 1	\$10,025,432	37%	\$3,659,452	\$3,587,861	36%	39%
NC 2A	\$10,704,050	33%	\$3,543,029	\$3,280,909	31%	23%
NC 2B	\$74,485,087	32%	\$23,886,015	\$6,835,647	9%	13%
NC 3	\$195,127,253	27%	\$52,773,948	\$1,623,055	1%	3%
SNH	\$200,560,655	23%	\$47,013,696	\$6,823,098	3%	10%
TOTAL	\$494,473,782	27%	\$131,285,714	\$22,559,019	5%	7%

Task Orders	Total Hours	African American		Asian		Caucasian		Hispanic		Other	
		Hours	%	Hours	%	Hours	%	Hours	%	Hours	%
NC 1	42,868	8,098	18.9%	626	1.5%	15,518	36.2%	16,830	39.3%	1,796	4.2%
NC 2A	30,270	4,621	15.3%	0	0.0%	12,347	40.8%	12,664	41.8%	637	2.1%
NC 2B	102,885	15,212	14.8%	1,971	1.9%	15,806	15.4%	63,184	61.4%	6,712	6.5%
NC 3	70,742	5,132	7.2%	12	.02%	15,118	21.4%	41,378	58.5%	9,102	12.9%
SNH	150,889	19,432	12.9%	12	.01%	37,668	25.0%	63,390	42%	30,387	20.1%
TOTAL	397,654	52,495	13.2%	2,621	.66%	96,457	24.3%	197,447	49.7%	48,634	12.2%

Task Order	Total Hours	Virginia		Maryland		Washington DC		Other *	
		Hours	%	Hours	%	Hours	%	Hours	%
NC Package 1	42,868	10,977	25.6%	25,111	58.6%	4,670	10.9%	2,109	4.9%
NC Package 2A	30,270	15,415	50.9%	13,748	45.4%	502	1.7%	605	2.0%
NC Package 2B	102,885	50,470	49.1%	29,572	28.7%	5,753	5.6%	17,089	16.6%
NC Package 3	70,742	33,686	47.6%	30,432	43.0%	1,501	2.1%	5,122	7.2%
SNH	150,889	59,116	39.2%	75,570	50.1%	9,750	6.5%	6,453	4.2%
TOTAL	397,654	169,664	42.7%	174,434	43.9%	22,177	5.6%	31,380	7.9%

REQUIREMENT: *1 School / Year*



CORE PROGRAMMING

WASHINGTON, DC:

- ☐ TBD
- ☐ Offering Firm Specific Workshops

SPANISH LANGUAGE:

- ☐ Fall, (September)
- ☐ New partnership with SPRINT
- ☐ Will be "live cast"

BALTIMORE:

- ☐ Fall, (October)



REQUIREMENT: *Two Relationships, One General Contractor (GC) & One Additional*

✓ **ACHIEVEMENT:** *3 in place*



Continued focus on building financial competency; tracking, reporting and billing



Continued Focus on building GC Capabilities



Continued Focus on building overall volume

REQUIREMENT: *2 college interns every summer of project*

✓ **ACHIEVEMENT:** *2019: 7 interns working on Project Journey*



Andrew Polson
Virginia Polytechnic Institute



Elizabeth Pasnik
George Wash Univ.



Jacob Fishman
Univ. of Virginia



Shakierah Freemantle
Morgan State Univ.



Bryson Boone
NC A&T Univ.



Erin Stewartson
Univ. of MD



Katharine Lockbaum
George Mason Univ.

ACTIVITIES

Community Engagement

June 28: EMBRY RUCKER
COMMUNITY SHELTER, Reston VA;
serving a BBQ lunch for the
underserved

July 19: Partnering with Veteran's
Administration to outfit a home for
a formerly homeless Vet and
working on environmental project
at Wolftrap

Project Engagement

July 23: Project Journey Overview
and Leadership Workshop

REQUIREMENT: *Participation in District Summer Program*

✓ **ACHIEVEMENT:** *4 Phelps ACE High School interns for summer 2018; planning for summer 2019*

ACE Programming
Scholar: **Beni Lavodrama**
Turner: Impact Award

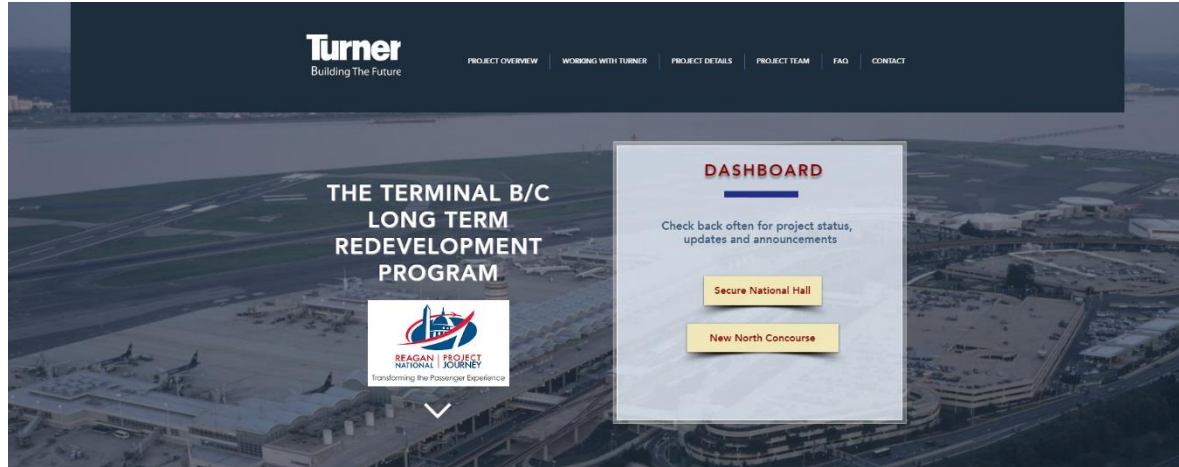


Summer 2019 Activity

- 4 interns started on June 25
- LDBE Audit Project
- Community Service on June 28, July 12th, July 19th and July 26, 2019

REQUIREMENT: *Implementation of a Project Website*
(Core communication point for subcontractor information and project status)

✓ **ACHIEVEMENT:** *www.Turner-DCAProjects.COM*



- **Implementation of a Hotline:** Alternative communication point for subcontractor information and questions

✓ **ACHIEVEMENT:** *(571) 260-0440*





METROPOLITAN
WASHINGTON
AIRPORTS AUTHORITY

MWAA.COM